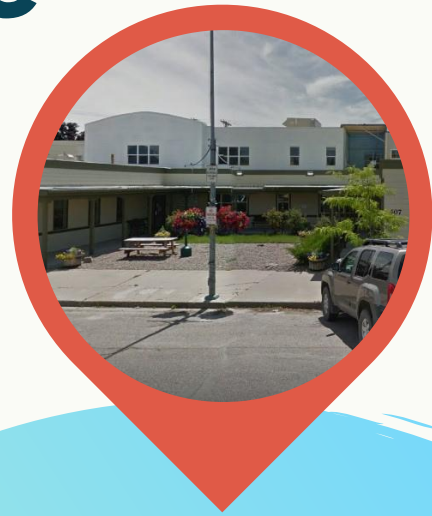


MMAPP



Self-Guided Pedal-to-Plate Bike Route

ridewithgps.com/routes/32951493



North Mission Valley

- **BEGIN** ON MAIN STREET AND 4TH AVE SW IN RONAN AND MISSION MOUNTAIN FOOD ENTERPRISE CENTER.

Mission Mountain Food Enterprise Center is a fully functioning food processing, research, and development facility.

- **HEAD NORTH** ONE BLOCK AND TURN **LEFT ON ROUND BUTTE ROAD**
- **BIKE WEST ON ROUND BUTTE ROAD**, UNTIL YOU REACH THE OLD RAILROAD TRACKS AND GRAIN ELEVATOR AT WESTLAND SEED. HERE YOU CAN GET ONTO **THE PETE JENSEN MEMORIAL BIKE PATH** ON THE RIDE SIDE OF THE ROAD.
- **RIDE ON THE BIKE TRAIL UNTIL IT ENDS AT LEIGHTON ROAD. TURN RIGHT ON LEIGHTON ROAD.** THERE ARE NUMEROUS CATTLE OPERATIONS ALONG LEIGHTON ROAD, AND YOU CAN ENJOY PASTORAL VIEWS OF THE MISSION VALLEY. IN SPRING, KEEP YOUR EYES OPEN FOR NEW CALVES!





- **RIDE ON LEIGHTON ROAD FOR ABOUT 4 MILES** UNTIL THE PAVEMENT ENDS. AT THIS POINT, TURN RIGHT ON CARBINE ROAD.
- **RIDE ON CARBINE ROAD UNTIL ITS TERMINUS,** WHERE YOU WILL TURN LEFT ON OLD HIGHWAY 93.
 - RIDE ON OLD HIGHWAY 93 THROUGH THE SMALL COMMUNITY OF PABLO.
- **WHERE OLD 93 ENDS, TURN LEFT ONTO LIGHT ROAD.**
- **RIDE ON LIGHT ROAD FOR ABOUT 1 MILE** AND THEN TURN RIGHT ONTO SKYLINE DRIVE.
- **RIDE ON SKYLINE DRIVE FOR ABOUT 3 MILES.**



- ON YOUR LEFT IS **PABLO NATIONAL WILDLIFE REFUGE AND THE PABLO RESERVOIR.** CONSIDER TAKING A BREAK HERE TO WATCH THE MANY WATERFOWL THAT MAKE THEIR HOMES HERE.
- **WHEN YOU REACH CAFFREY ROAD, A BIKE TRAIL BEGINS ON THE RIGHT SIDE OF SKYLINE DRIVE.** GET ON THE BIKE TRAIL AND CLIMB TO THE TOP OF THE HILL.



- AT THE TOP OF THE HILL **CROSS SKYLINE DRIVE TO STAY ON THE BIKE TRAIL** (NOW ON THE LEFT SIDE OF THE ROAD.) ENJOY YOUR **FIRST VIEWS OF FLATHEAD LAKE** AS YOU DESCEND INTO THE COMMUNITY OF POLSON.
- CONTINUE DOWN THE BIKE TRAIL UNTIL IT ENDS NEAR THE HOSPITAL AND THEN CONTINUE INTO TOWN ONTO 1ST ST E.
- AT **10TH AVE E. TURN LEFT AND MAKE A STOP AT GLACIER BREWING** FOR AN ICE COLD PINT OF LOCAL BEER OR HOMEBREWED SODA.
- RETURN TO 1ST ST. E, AND BIKE THROUGH DOWNTOWN POLSON, THERE ARE MANY GREAT RESTAURANTS IN POLSON'S MAIN STREET NEIGHBORHOOD AND THIS A GOOD PLACE TO STOP FOR LUNCH IF DESIRED.
- CROSS HIGHWAY 93 AFTER CROSSING THE HIGHWAY, TAKE THE FIRST RIGHT ONTO 1ST AVE E. AT THE END OF THIS BLOCK YOU WILL FIND **FLATHEAD LAKE CHEESE**.
- CONTINUE BACK ONE BLOCK ON 1ST ST. E. AND TURN RIGHT ON KOOTENAI AVENUE. STOP AT THE VIEWPOINT TO TAKE IN BEAUTIFUL FLATHEAD LAKE. **THIS IS THE LARGEST NATURAL FRESHWATER LAKE WEST OF THE MISSISSIPPI!**



Glacier Brewery is under new ownership. Stop by to see how they put their spin on a Polson favorite.



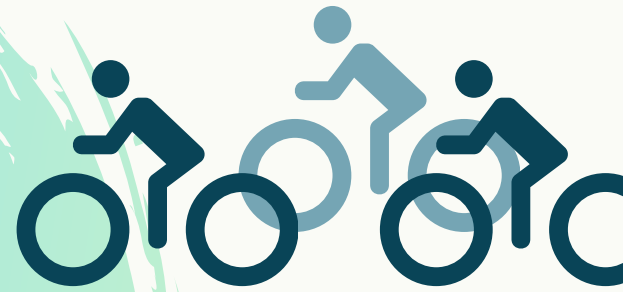
Flathead Lake Cheese makes artisanal hand-crafted cheese made right in downtown Polson, MT. Riders can bike right up to their drive up window for samples and bring home a wedge of their famous Doorstop Gouda!



*Flathead Lake can be explored in endless ways. Check out Polson Chamber of Commerce's Visitor Guide for a listing of local businesses and outdoor recreation options by the lake!
polsonchamber.com/2019-2020-guide*



- **AT THE LIBRARY, TAKE A SHARP HAIRPIN TURN DOWN TO THE LAKESHORE PATH IN SACAJAWEA PARK.** TURN LEFT AT THE BOTTOM OF THE HILL AND FOLLOW THE BIKE TRAIL ALONG THE SHORE AND UNDER HIGHWAY 93 AND INTO RIVERSIDE PARK. CONTINUE ON THE TRAIL OUT OF THE PARK AT THE END OF THE PARKING LOT.
- AT THE TOP OF THE HILL WHERE THE TRAIL ENDS, **TURN LEFT ON 4TH AVE W. BIKE 9 BLOCKS UNTIL 8TH ST. E.**
- **TURN RIGHT ON 8TH ST. E** AND BIKE ON IT ABOUT A HALF MILE UNTIL IT ENDS AT 7TH AVE E.
- **TURN LEFT ON 7TH AVE E FOR ABOUT 100 YARDS, AND THEN TAKE ANOTHER LEFT ONTO THE BIKE TRAIL.**
- **CONTINUE SOUTH ON THE BIKE TRAIL FOR ABOUT 7 MILES, THROUGH THE TUNNEL AND PAST THE FIRST SET OF TRAFFIC LIGHTS.**
- AT THE SECOND SET OF LIGHTS **TURN LEFT FROM THE BIKE TRAIL ONTO COURVILLE TRAIL.**
- **CONTINUE TOWARD THE MISSION MOUNTAINS** ON COURVILLE TRAIL, CROSSING THE CANAL, UNTIL IT SWINGS RIGHT AND BECOMES CANAL ROAD.
- RIDE ON CANAL ROAD FOR TWO MILES AND THEN TURN ON LEFT ON EMORY ROAD AND **ENJOY A WELL-DESERVED DOWNHILL FOR ONE MILE.**



CONSIDER STOPPING AT **THE PEOPLE'S CENTER.**



"Sqelixw-Aqlsmaknik (The People's Center) is the place to experience the rich cultural heritage of the Salish, Pend d'Oreille and Kootenai tribes. The People's Center perpetuates this rich heritage, through our tradition of oral history, and by creating opportunities of exchange between tribal elders, youth and the public." - The Peoples Center

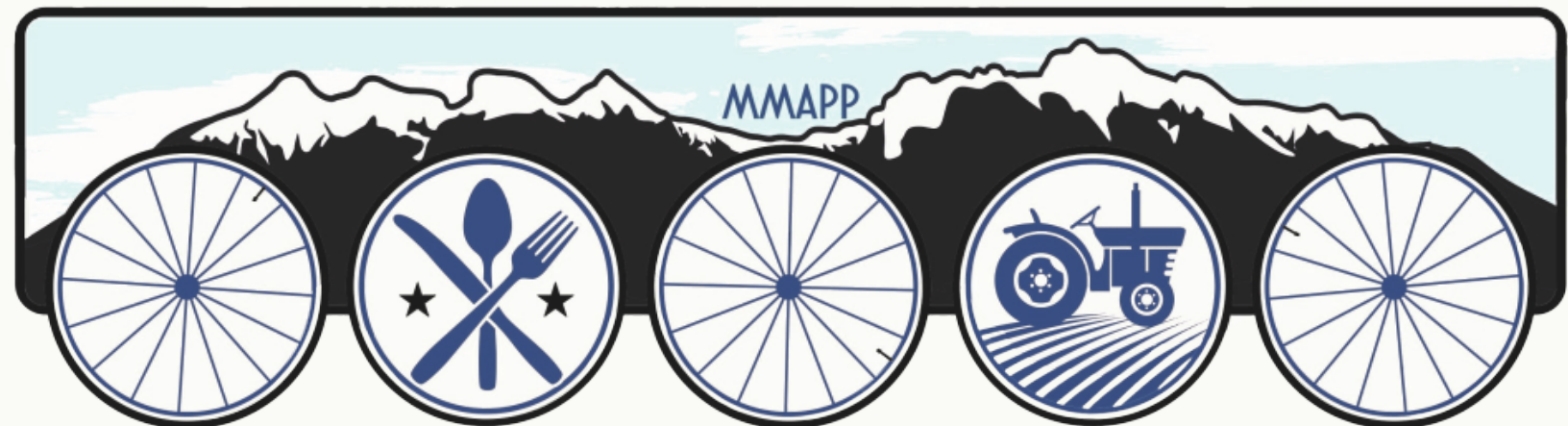


- AT THE BOTTOM OF THE HILL **TURN LEFT ONTO N. FOOTHILLS DR.** RIDE ON N. FOOTHILLS FOR FOUR MILES.
- **TURN RIGHT AT TERRACE LAKE ROAD.**
- RIDE BACK INTO RONAN ON TERRACE LAKE ROAD. CROSS HIGHWAY 93 AND CONTINUE FOUR BLOCKS TO TURN LEFT ON 4TH AVE SW.

End your ride with a beer at
Ronan Cooperative
Brewery! ☐



The purpose of the Ronan Cooperative Brewery is to maintain a brewery and taproom in Ronan, Montana, as a place for the community to gather and enjoy great beer and to support a vibrant, economically thriving Main Street. The Cooperative will support and promote the local community, economy, agriculture and craft beer.



Self-Guided Pedal-to-Plate Bike Route



ridewithgps.com/routes/32951493

